



Gallery Sumukha

Presents

'PARALLAX'

Lenticular prints by BAIJU PARTHAN

12th October, 2022 - 12th November, 2022
Monday to Saturday between 11:00 am – 6:00 pm

'PARALLAX'

by

BAIJU PARTHAN

The show title 'Parallax' works as a metaphor for altered perception, and underlines the artist's exploration into shifts in perception brought about by digital and information technology. For more than two decades or so, Baiju Parthan has tried to present his point of view that the increase in technologically generated virtual experiences are altering our experience of reality. According to the artist these alterations could possibly bring about a perceived loss of tactileity to real world experiences, and probably interfere with our ability to differentiate between what is real and what is fake.

'Parallax' by definition is an optical phenomenon that describes the perceived visual displacement of an object when viewed from two distinctly different viewing angles.

Lenticular prints take advantage of the parallax effect to create the illusion of three-dimensional depth and movement. Lenticular prints are in effect interactive artworks that require the viewer to move across viewing angles rather than resorting to a fixed viewing position to activate the virtual depth perception suggested in the artworks.

BAIJU PARTHAN (1956, Kerala, India)

EDUCATION:

Bachelors Degree in Painting -B.F.A

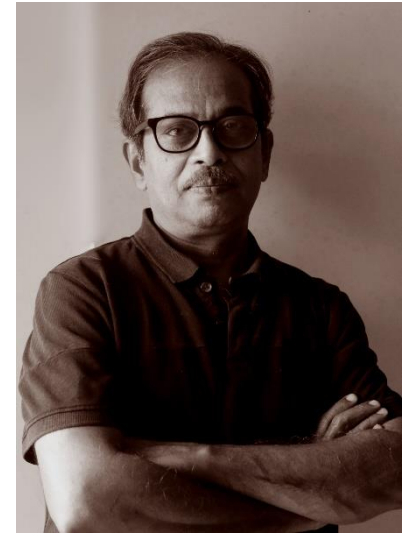
Bachelor of Science Degree in Botany-B.Sc

Postgraduate Diploma -Comparative Mythology

Master of Arts Philosophy-MA

Baiju Parthan is an inter-media artist, working simultaneously with traditional media of painting as well as new media and digital technology based installation and video art. He is one of the early exponents of new media art and mediatic-realism in the Indian contemporary art scene. His work explores the ongoing collision between world-views and ideologies and the resulting ontological fallout that we accommodate and deal with in everyday life.

Baiju Parthan's chosen vocabulary consists of arcane symbols, found imagery, as well as contemporary photographic materials that are woven together to create a dense multi layered phenomenological landscape. His work in the digital realm consists mainly of explorations into the mutating boundary where the virtual and real bleed into each other. Through a range of computer generated virtual objects presented as video installations, large scale prints on metallic surfaces, and 3D lenticular prints, Parthan manages to present a critique on high technology and its impact on our life and experience of reality. He has participated in several landmark exhibitions including, New Interventions in Indian Art, China Art Museum Shanghai & Gaungdong Museum of Art, Guangzhou, China 2015, INDIA!, Centro Cultural Banco do Brasil (CCBB), Rio de Janeiro 2012, Indian Contemporary, Benedictine Museum, Fecamp, France, 2009, Beyond Globalization, Beijing, 2009, 101 Contemporary, Tokyo, 2008, International Live Art Festival Glasgow 2004, Kapital and Karma, Kunsthalle Wien, Austria 2002, and has shown at several important art fairs.





'Vicissitudes of Knowledge- EDEN-02'

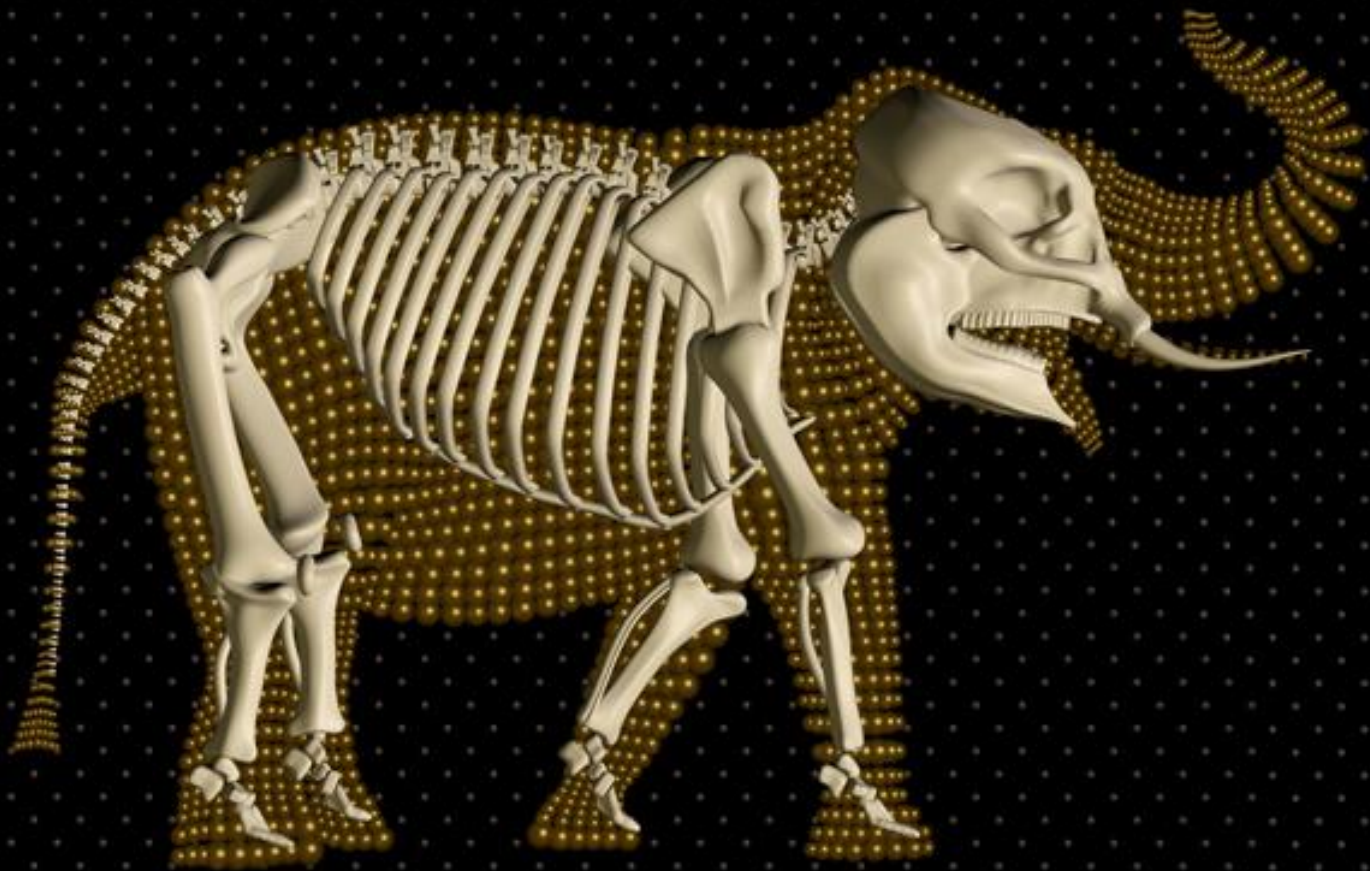
Animated 3D Lenticular print

36 x 27 inches

1st of 6 editions

2018

MEMENTO MORI



Elephas maximus indicus

'Process E - Golden Tusker (*Elephas maximus*)'

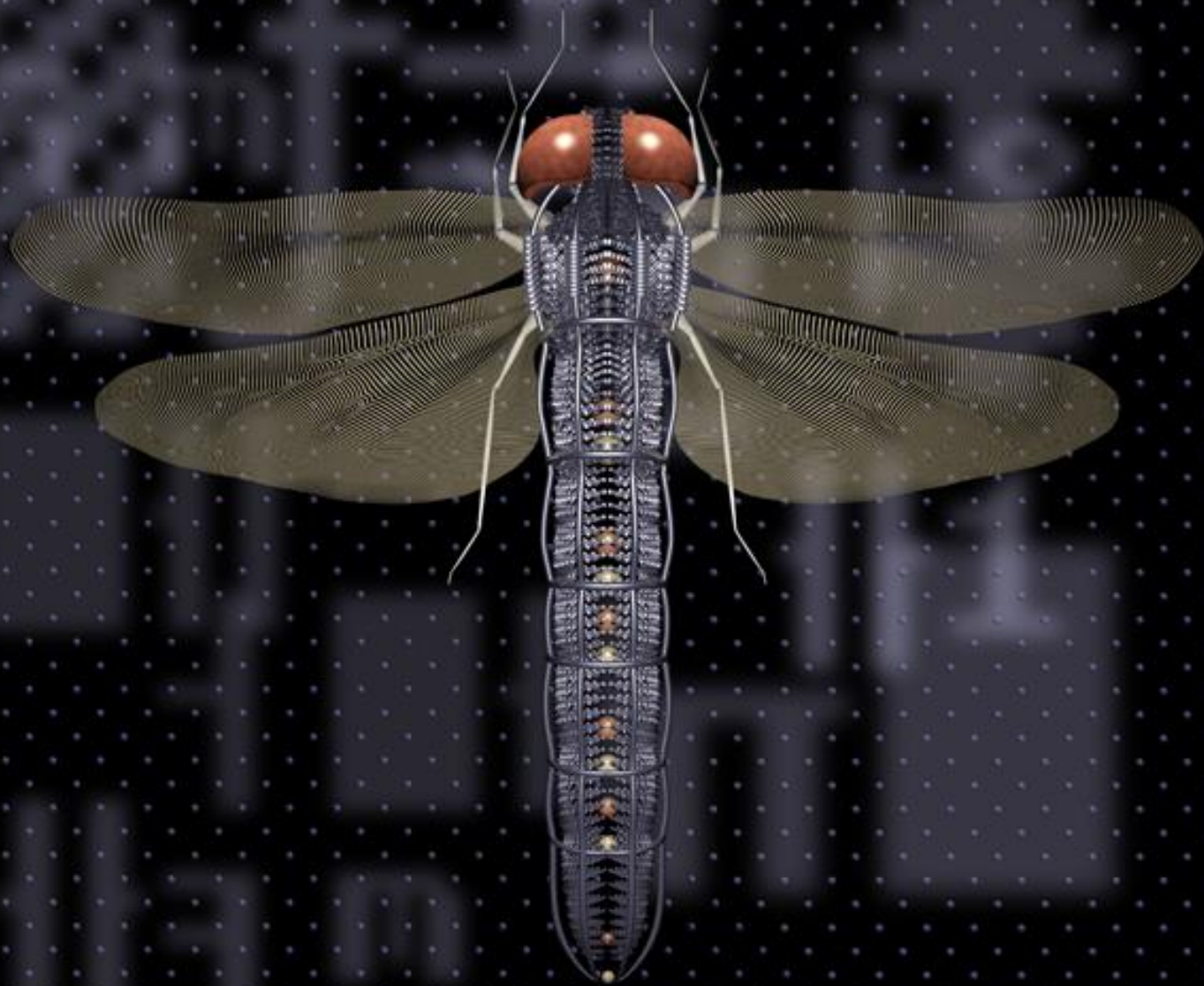
Animated 3D Lenticular print

16 x 16 inches

1st of 6 editions

2013

Anisoptera metallicis



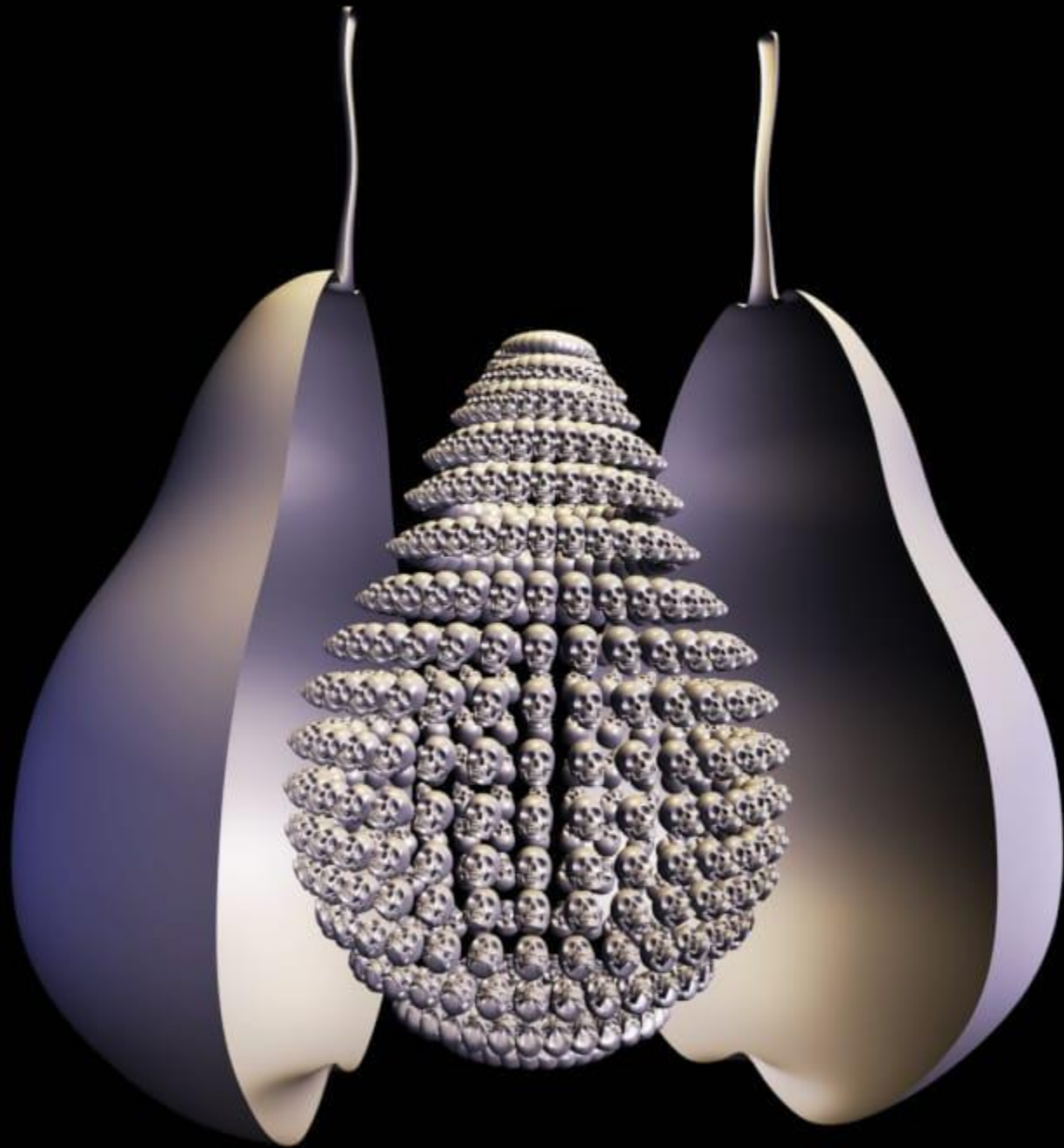
'Process D - Dragonfly (Anisoptera Matallicis)'

3D geometry array Lenticular print

16 x 16 inches

1st of 6 editions

2014



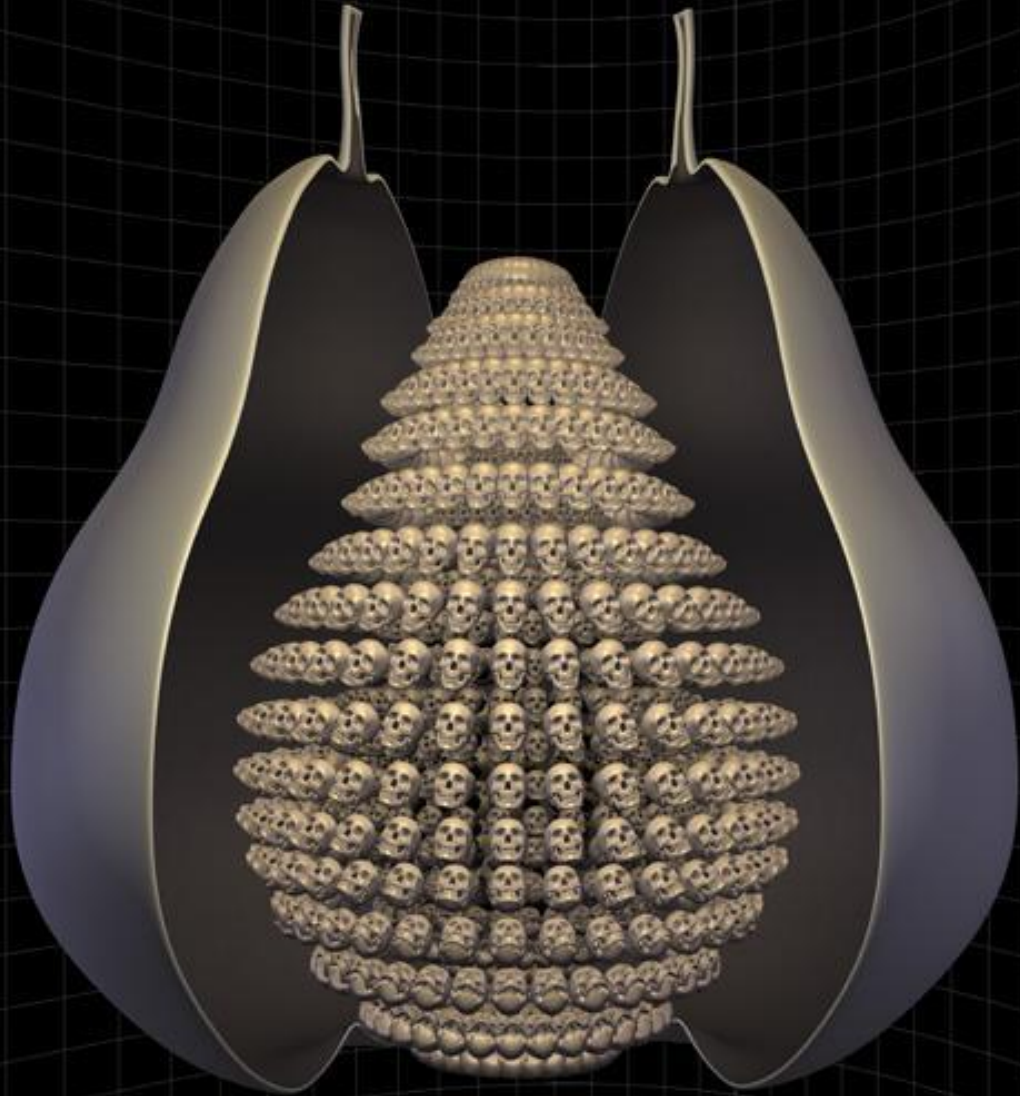
'Engineered fruit'

3D Lenticular print

16 x 16 inches

2nd of 6 editions

2011



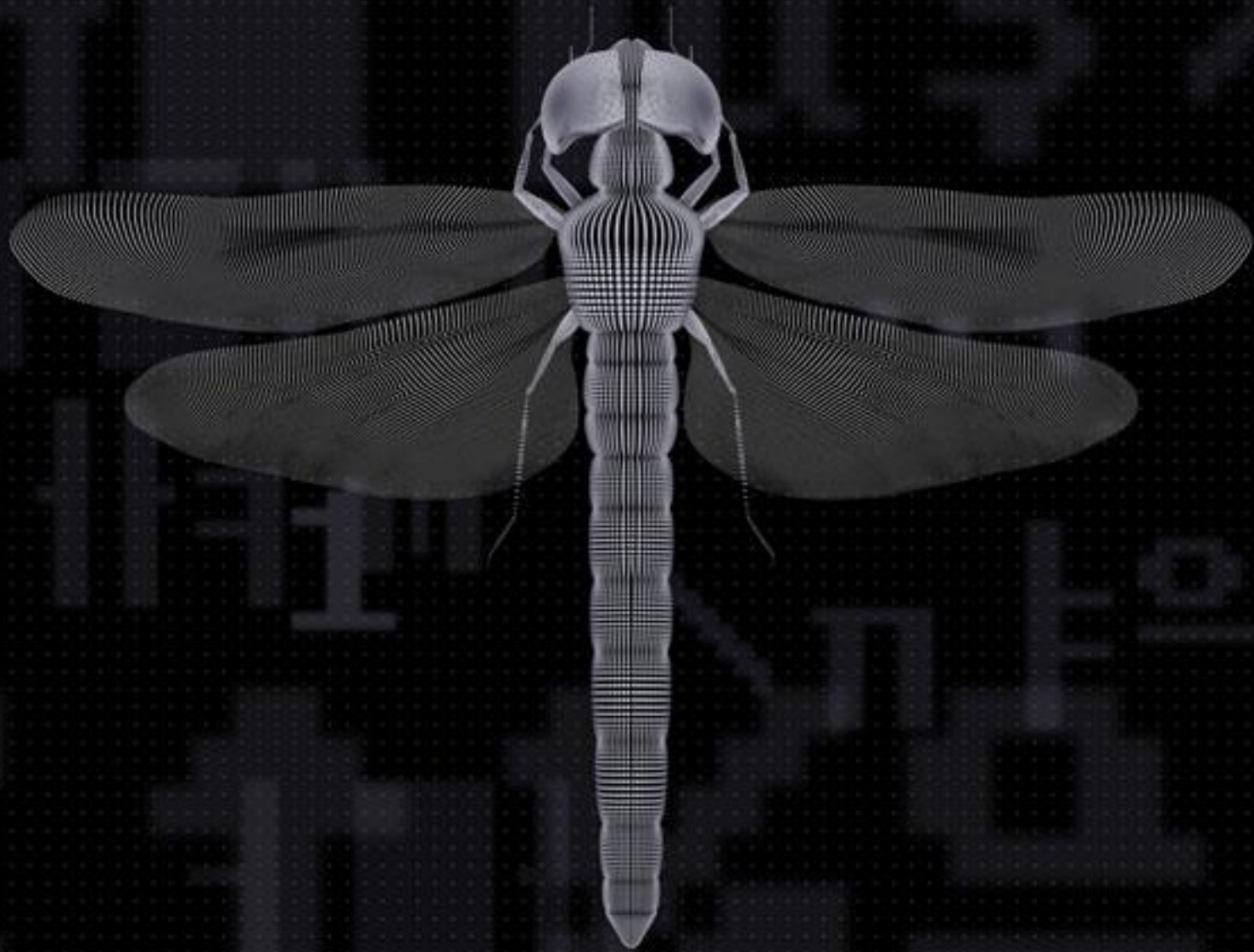
'Manifesto'

3D Lenticular print

16 x 16 inches

2nd of 6 editions

2011



Orthetrum sabina

'Process - D (Dragonfly - Orthetrum Sabina)'

3D geometry array - Lenticular print

36 x 36 inches

1st of 6 editions

2013



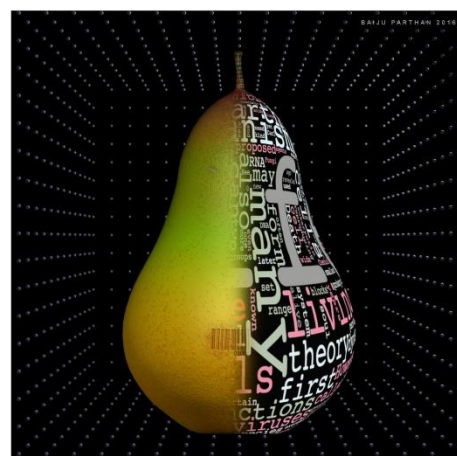
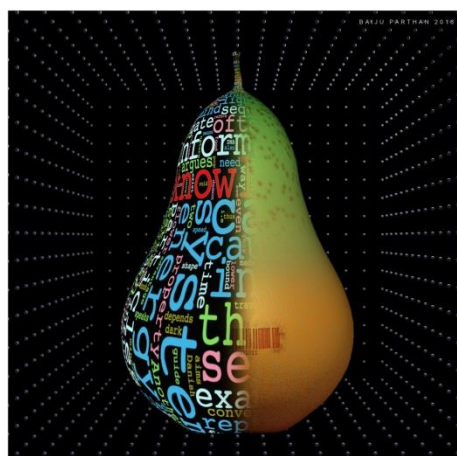
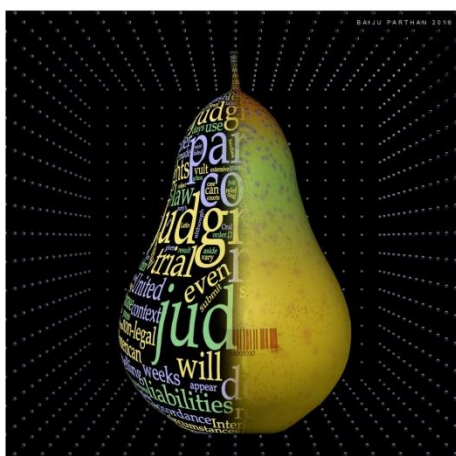
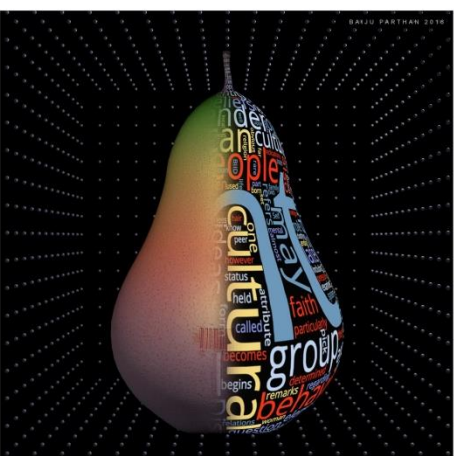
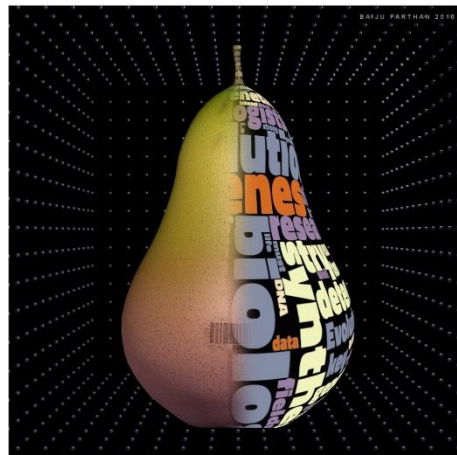
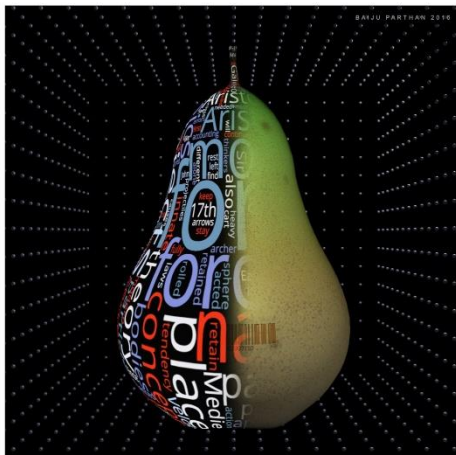
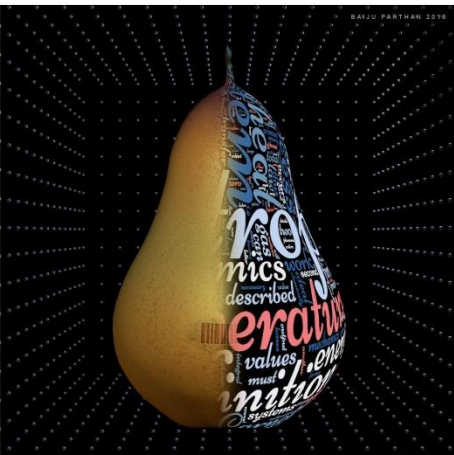
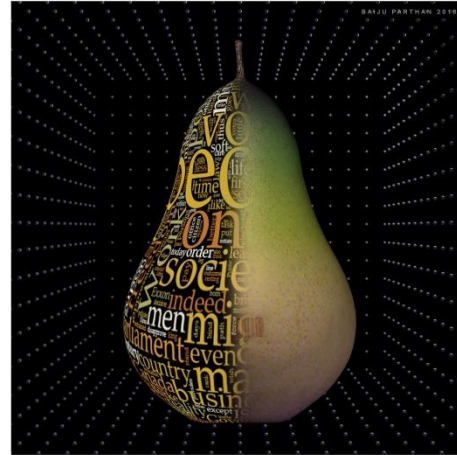
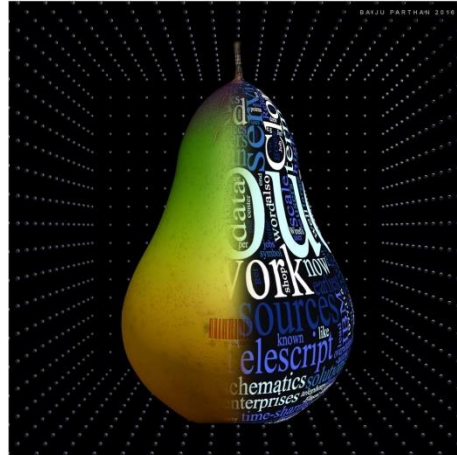
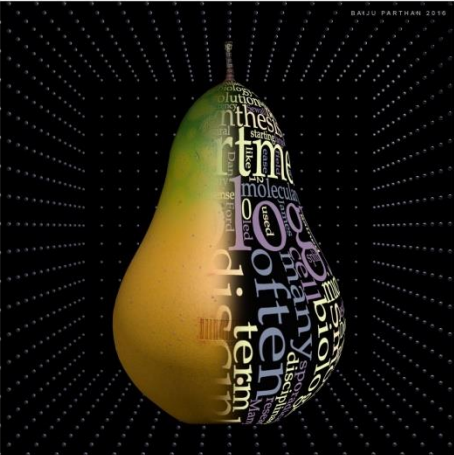
'Big Data (Cloud- 01, 02 & 03)'

Animated 3D Lenticular print

40 x 120 inches each (Triptych)

5th of 6 editions

2016



'FRUCTUS NUBES (Fruit cloud)'

Animated 3D Lenticular print
22 x 22 inches each (Set of 12)
5th of 6 editions
2016
